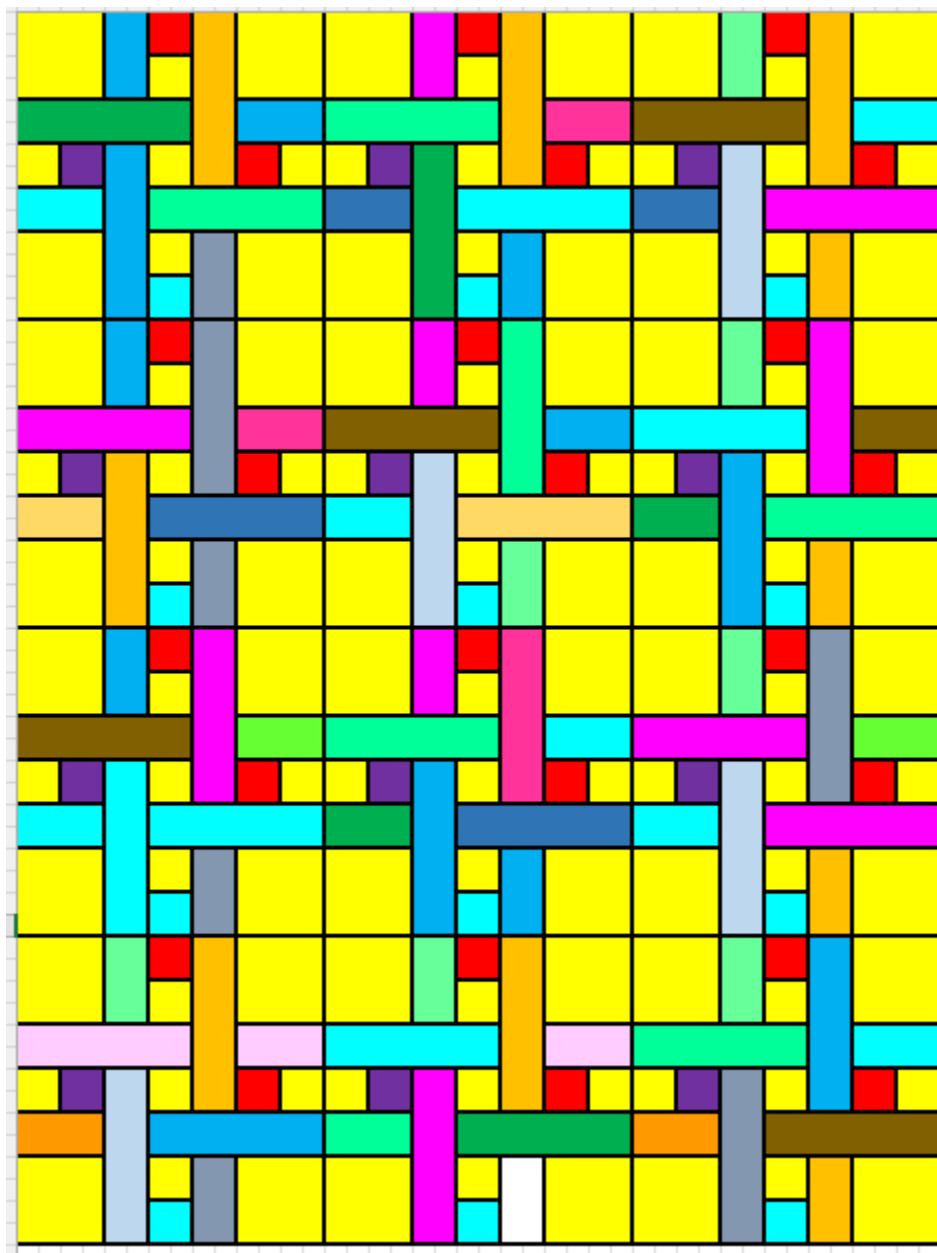


Sharon's Scrappy Weave



Fabric Requirements:

Background Fabric:

cut 48 4.5" squares

cut 60 2.5" squares

cut 48 assorted 2.5" squares

cut 48 assorted 2.5" x 4.5" rectangles

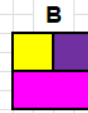
cut 48 assorted 2.5" x 8.5" rectangles

Assembly Instructions:

1. Sew (1) 2.5" background to sq. to (1) 2.5" sq.



2. Take Unit A and sew 2.5" X 4.5" rectangle underneath.



3. Take Unit B and sew 4.5" background square underneath.



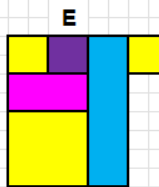
4. Take Unit C and sew 2.5" x 8.5" rectangle on the right side.



Assemble Block:

Each block requires 4 unit D + 2.5" background square

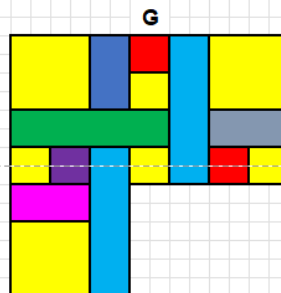
5. Take 1 Unit D and 1 2.5" background square. Sew together for 1.5" (partial seam).



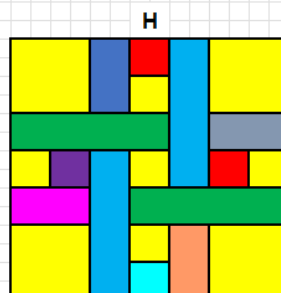
6. Take 1 Unit D and sew the entire 8.5" edge along the top of Unit E.



7. Take 1 Unit D and sew the entire 8.5" edge along the right side of unit F.



8. Take 1 Unit D and sew the entire 8.5" edge first. Then, starting at the partial seam in step 5, finish sewing the entire seam closed.



To Assemble Quilt: 3 blocks across x 4 rows